

SECTIONS 31, 32, & 33, T.6N., R.1E., S.L.B. & M.

HUNTSVILLE DISTRICT

SCALE 1" = 1,000'

TAXING UNIT: 58, 318

SEE PAGE 42

N 89°34'00" E 74.90 CHS

80.00 CHS

80.00 CHS

SEE BOOK 14, PAGE 109

SNOWBASIN RESORT CO.

200430001
596.7 AC±
TU 58

31

OGDEN VALLEY NATURAL GAS IMPROVEMENT DISTRICT

32

UNITED STATES OF AMERICA
200430002
472.38 AC±
TU 318

SEE POOK 23
PAGE 1

S 89°53'00" E

SEE POOK 23
PAGE 4

UNITED STATES OF AMERICA
200430004
27.24 AC±
4,892.10'

S 00°14'07" W

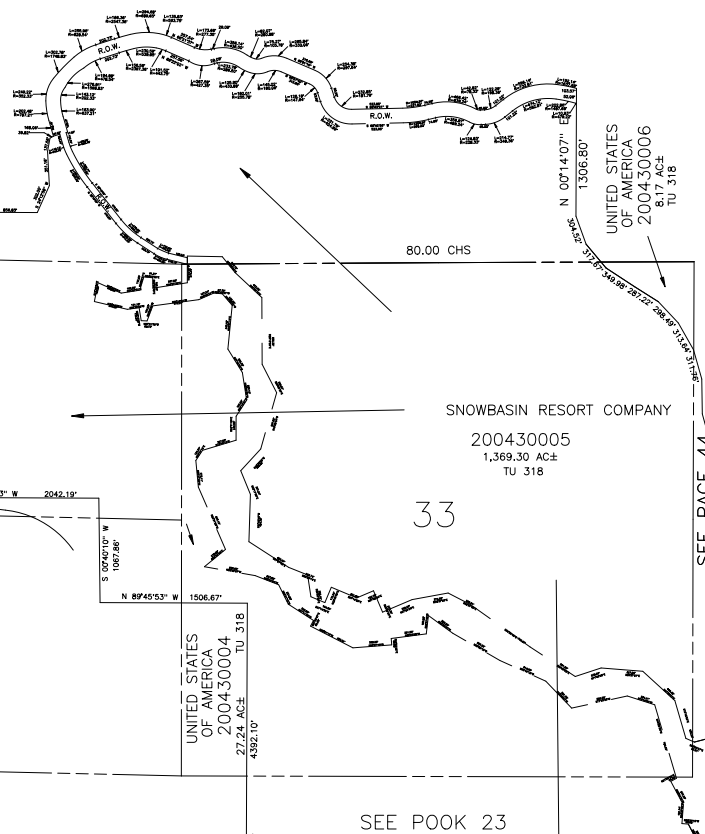
SEE POOK 23
PAGE 3

SNOWBASIN RESORT COMPANY

200430005
1,369.30 AC±
TU 318

33

SEE PAGE 44



UNITED STATES OF AMERICA
200430006
8.17 AC±
TU 318

N 00°14'07" W
1,306.80'

S 55°32'37" W 346.98'

S 89°53'00" E 315.96'

S 00°14'07" W 1,067.56'

N 89°45'53" W 1,506.67'

N 89°45'53" W 2,042.19'

S 00°14'07" W 1,103.88'

N 87°32'57" E 2833.40'

N 02°18'54" E 1895.60'